

BIFMA

BUSINESS +
INSTITUTIONAL
FURNITURE
MANUFACTURERS
ASSOCIATION

Top Up Your Toolbox: The *Revised* BIFMA Ergonomics Guideline Explained

Lucy Hart, MSc CCPE
Chair, BIFMA Ergonomics Subcommittee

Agenda

- What is BIFMA
- Challenges for Customers & Furniture Manufacturers
- BIFMA G1 Ergonomics Guideline
 - Background
 - Sneak Peek at Revised Guideline



BUSINESS +
INSTITUTIONAL
FURNITURE
MANUFACTURERS
ASSOCIATION

- Who:
 - Not-for-profit trade association for business and institutional furniture manufacturers
 - Voice of the commercial furniture industry
- What:
 - Develops safety & performance standards
 - Provides industry statistics and forecasts
 - Advocates for regulatory conditions
 - Serves as a forum for member cooperation and collaboration

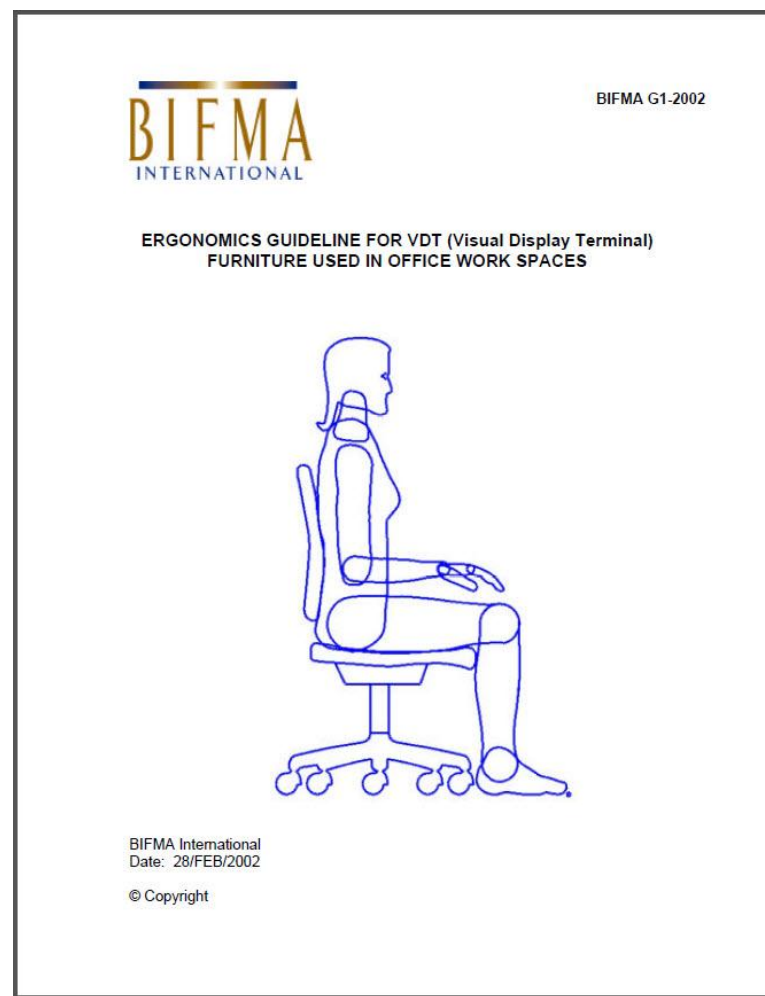
Challenges

- Technology Change
- Changing ways of work
- Aging worker
- Diversity
 - Multiple Generations
 - Abilities
 - Shape & size
- Injuries



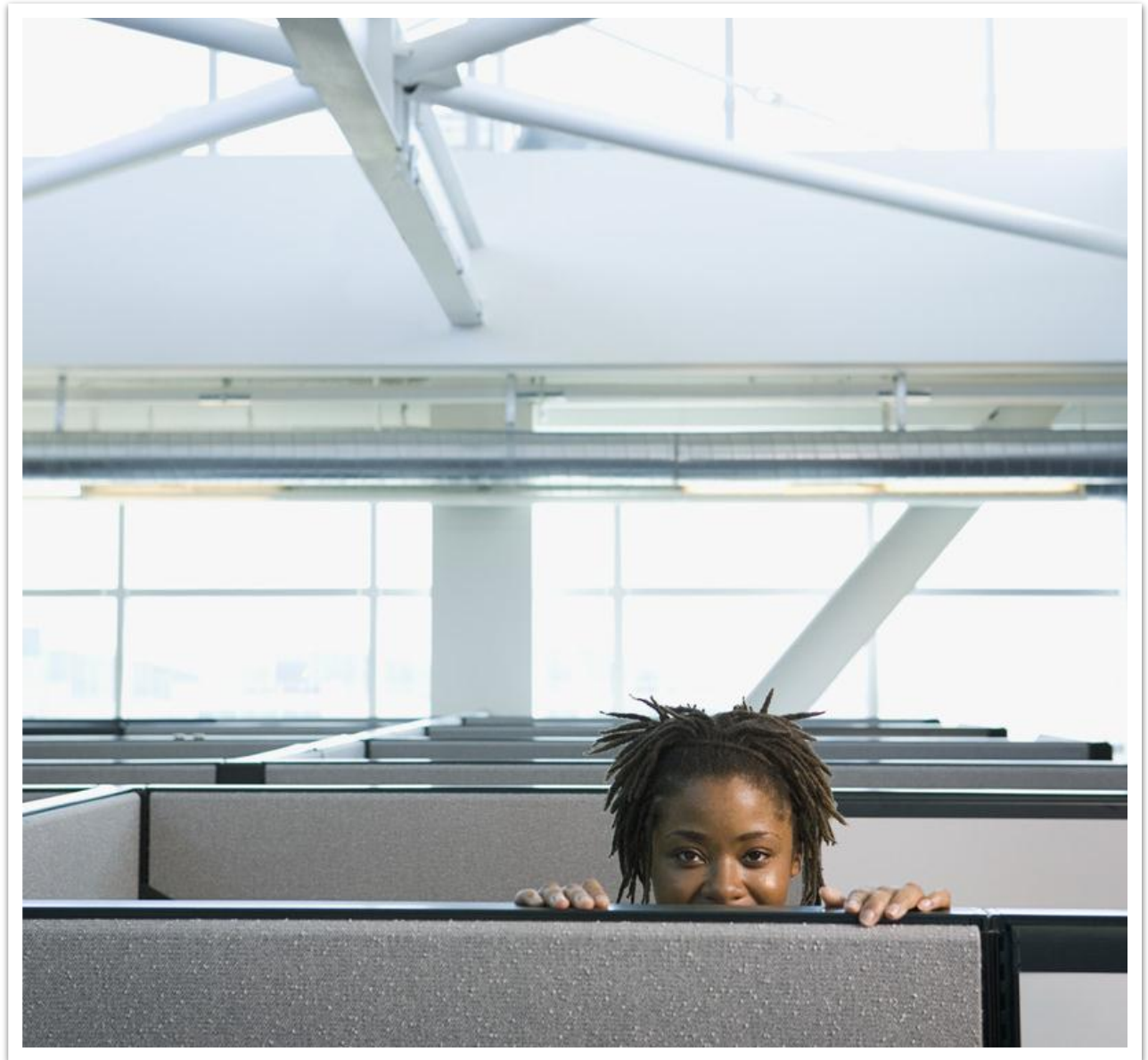
Background

- 1990's
 - ISO published a voluntary standard 9241
 - No current standard to guide BIFMA in the application of 9241
 - BIFMA began development of an ergonomics guideline based on most comprehensive anthropometric data available Natick 1988
- 2000's
 - BIFMA G1 published
 - Civilian anthropometric database published – CAESAR
 - BIFMA began revision of G1
- 2010's
 - BIFMA G1 revision on track for publication in 2013



Sneak Peek

- Status
- Scope
- Intended Users
- What's New
- Impact of New Anthropometric Data



Status of Revised Guideline

- Association Ballot
1st Q 2013
- Publication ETA
March 2013



Scope

- Guidance in developing, designing and specifying ergonomic solutions for computer workspaces in North America
- Based on relevant ISO 9241 measurable principles & design requirements



Intended Users

- BIFMA Members
- Interior Designers, Architects, Specifiers, Industrial Designers
- Facilities, Purchasing
- Ergonomist, Industrial Hygienists, OTs, Health Care Providers
- Test Labs
- Furniture Dealers & their clients
- Other professionals

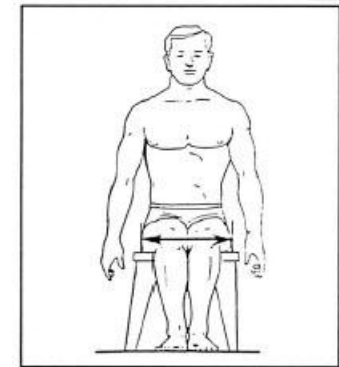
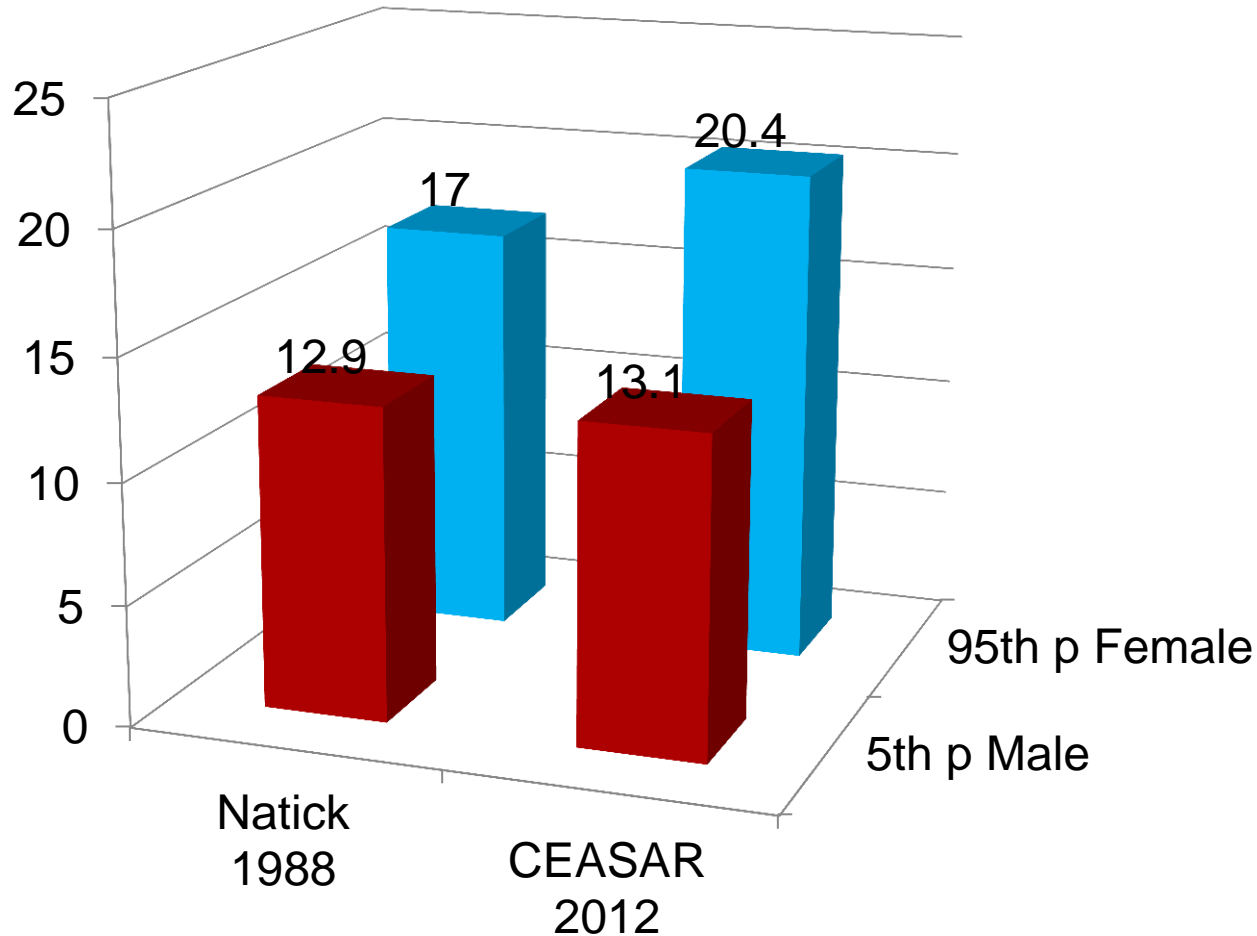


What's New

- General
 - Monitor Placement
 - Laptops
 - Multiple Monitors
 - Appendices
- Some changes to dimensions & adjustment ranges



Hip Breadth, Sitting



- 5th p Male
- 95th p Female

Seat Width

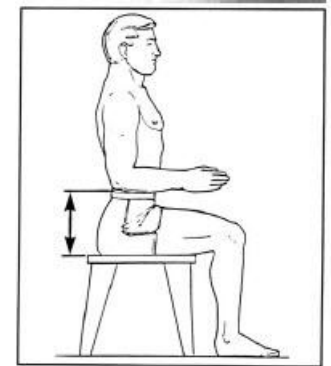
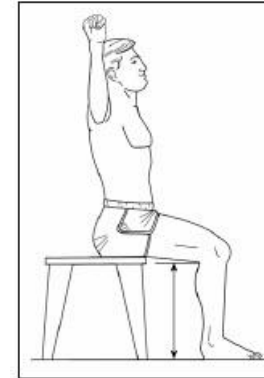
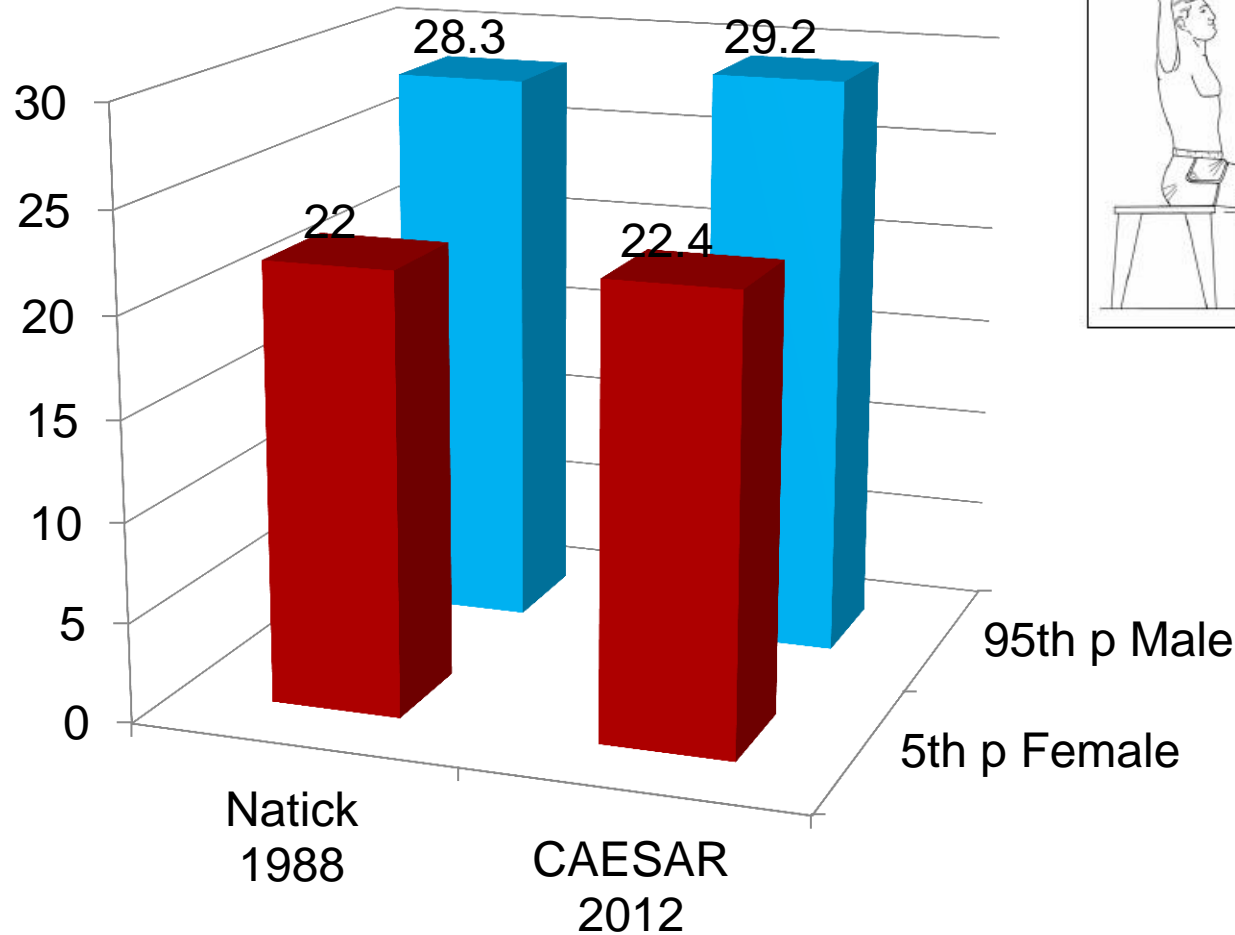


- No less than 457 mm (18.0 in.)



- At least 461 mm (18.1 in.) This seat width will accommodate at least* the 80th percentile female hip breadth and the 97th percentile male hip breadth.
- If a larger seat width is provided, the percentile of users supported should be stated.
 - e.g. a seat width of 517 mm (20.4 in.) will accommodate at least* the 95th percentile female hip breadth and greater than the 99th percentile male hip breadth.

Popliteal Height + Elbow Height



- 5th p Female
- 95th p Male

Support Surface Height – Input Device



- If fixed:
No less than 724 mm
(28.5 in.)
- If adjustable, min. range:
563 mm (22.2 in.) to
724 mm (28.5 in.)



- If fixed:
No less than 747 mm
(29.4 in.)
- If adjustable, min. range:
575 mm (22.6 in.) to
747 mm (29.4 in.)



March 18-21, 2013
Hilton Anatole
Dallas, Texas

FOR A COMPLETE LOOK AT BIFMA G1-20XX

Join us at AEC 2013!

Body Dimensions G1-2002 vs. G1-20XX
Revised Dimensions & Adjustment Ranges
New Sections
New Appendices
Lively Discussion!

BIFMA

BUSINESS +
INSTITUTIONAL
FURNITURE
MANUFACTURERS
ASSOCIATION

QUESTIONS

WWW.BIFMA.ORG

EMAIL@BIFMA.ORG

616 285 3963

678 FRONT AVE NW, STE. 150

GRAND RAPIDS, MI 49504

BIFMA

BUSINESS +
INSTITUTIONAL
FURNITURE
MANUFACTURERS
ASSOCIATION

THANK YOU !

WWW.BIFMA.ORG
EMAIL@BIFMA.ORG
616 285 3963
678 FRONT AVE NW, STE. 150
GRAND RAPIDS, MI 49504